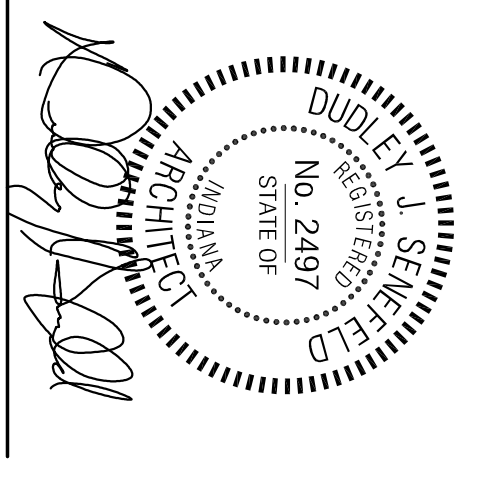
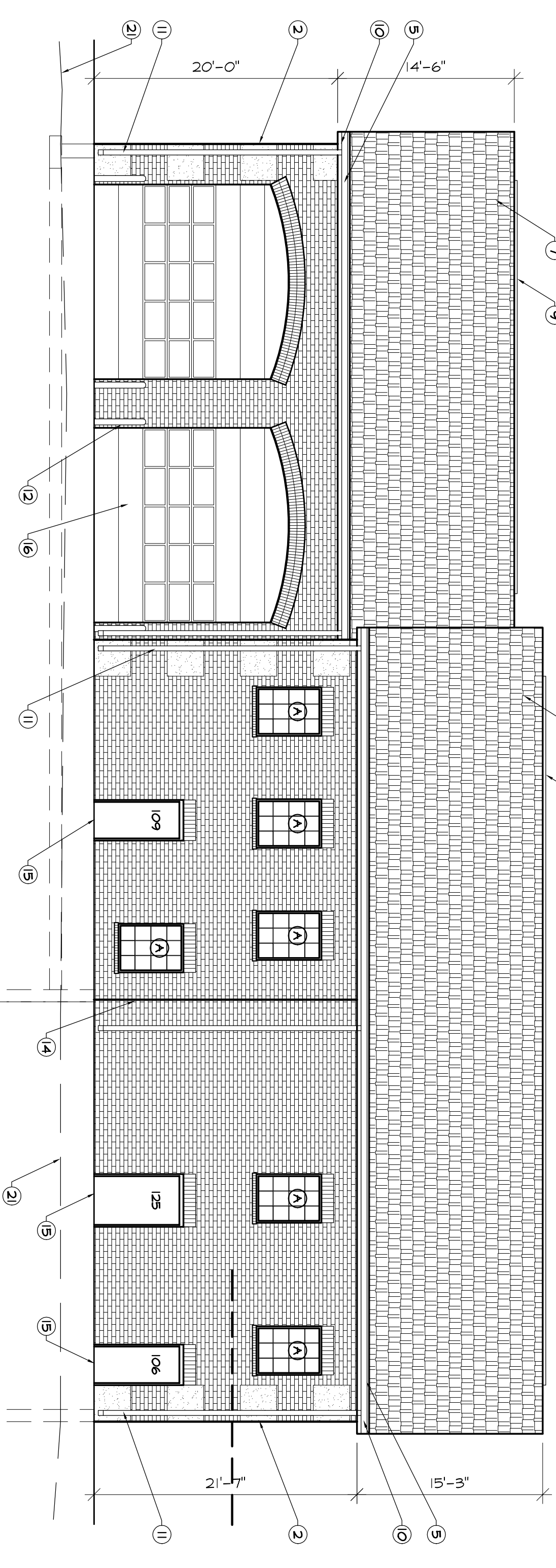


Senefield and Associates,
Architects, Inc.
802 Mulberry St., 11-1
Noblesville, Indiana 46060
P. (317) 774-1400
F. (317) 774-8518

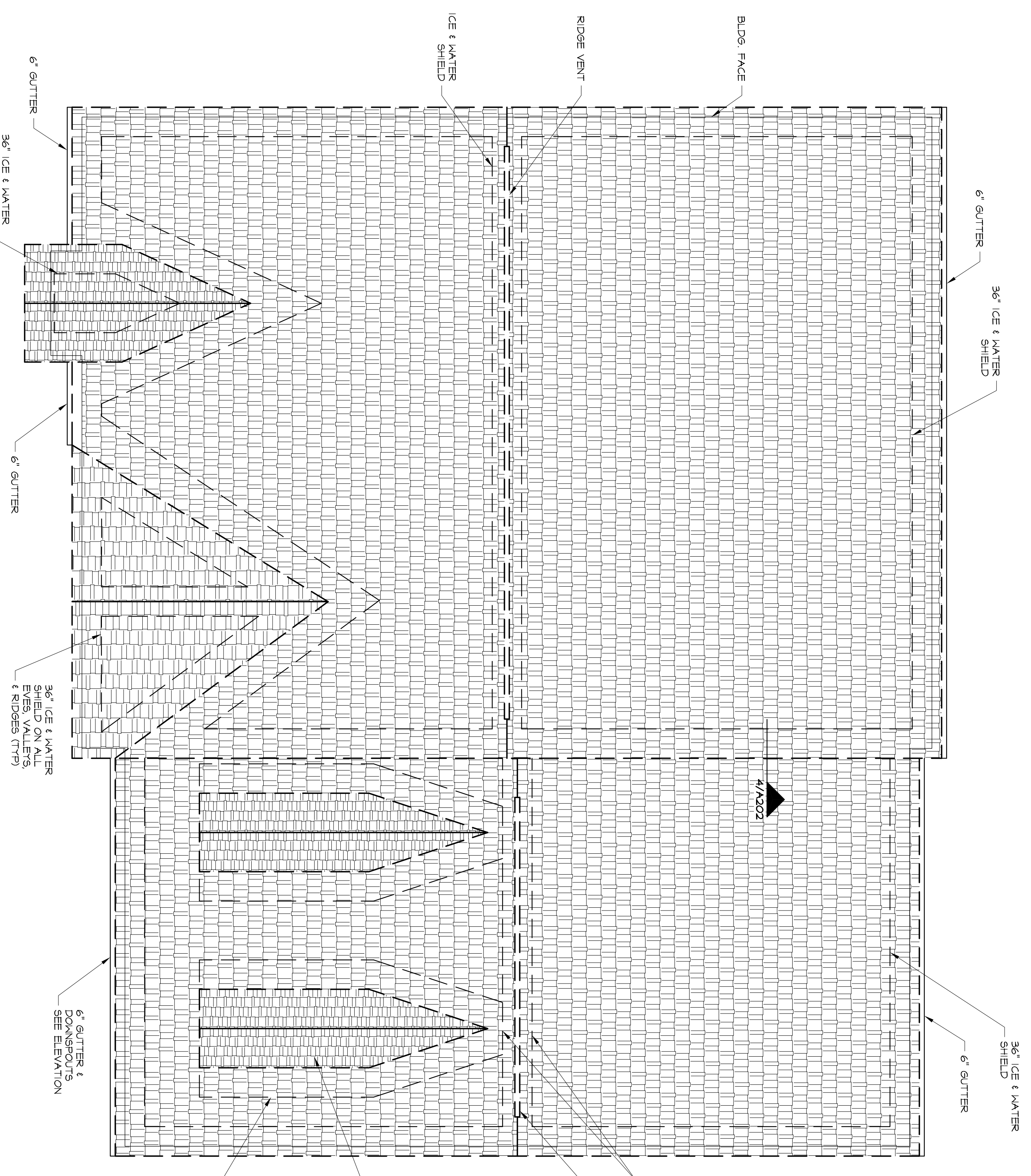


SPECIFIC PLAN NOTES:

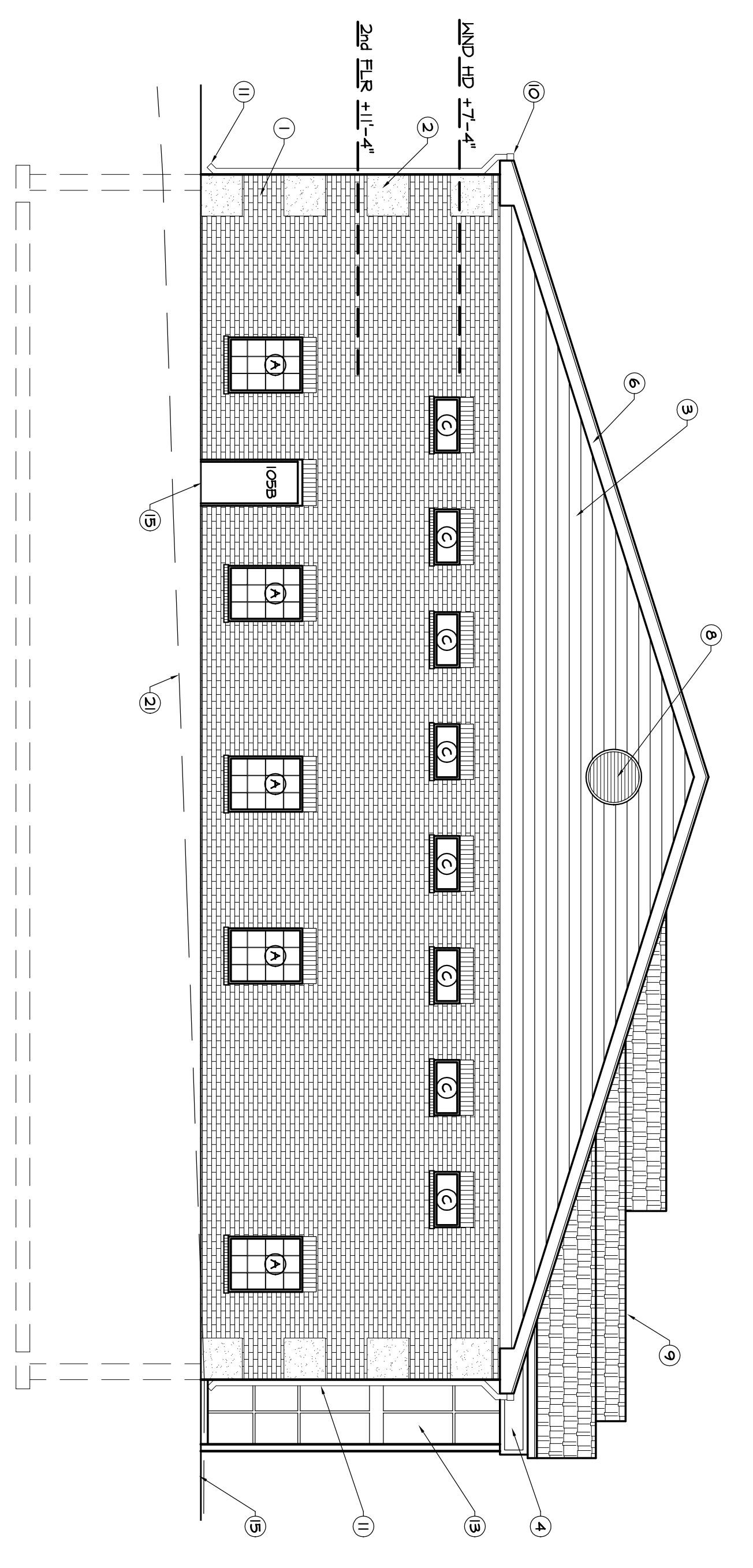
- ① MASONRY VENEER, SEE SPECS.
- ② KEYS (TYPICAL)
- ③ 6" CERAMIC LAP SIDING
- ④ E.I.F.S
- ⑤ PRE-FINISHED METAL FASCIA
- ⑥ PRE-FINISHED METAL RAKE BRD.
- ⑦ SHINGE ROOF, SEE SPECS.
- ⑧ DECORATIVE VENT LIKE FPPOX 24" RAD.
- ⑨ RIDGE VENT
- ⑩ 6" METAL GUTTER
- ⑪ DOWN SPOUT & SPLASH BLK (TYP)
- ⑫ STEEL BOLLARD, CONCRETE FILLED
- ⑬ ALUMINUM STOREFRONT ENTRY
- ⑭ CONTROL JOINT
- ⑮ STOOP OR SIDEWALK, SEE CIVIL PLANS
- ⑯ OVERHEAD DOORS AND JAMBS TO BE PAINTED
- ⑰ SIGNAGE BY OWNER, B.P. #14 TO PROVIDE 120 V POWER & PHOTO CELL FOR FUTURE SIGN, LOCATIONS TO BE COORDINATED WITH THE ARCHITECT
- ⑱ EIFS MULTIBLOCK CROSS, INLAID IN MASONRY WALL, SEE DETAIL.
- ⑲ FIXED WINDOWS
- ⑳ GLASS TO BE SAFETY W/2 INSL. PANES
- ㉑ EXISTING GRADE (APPROX)



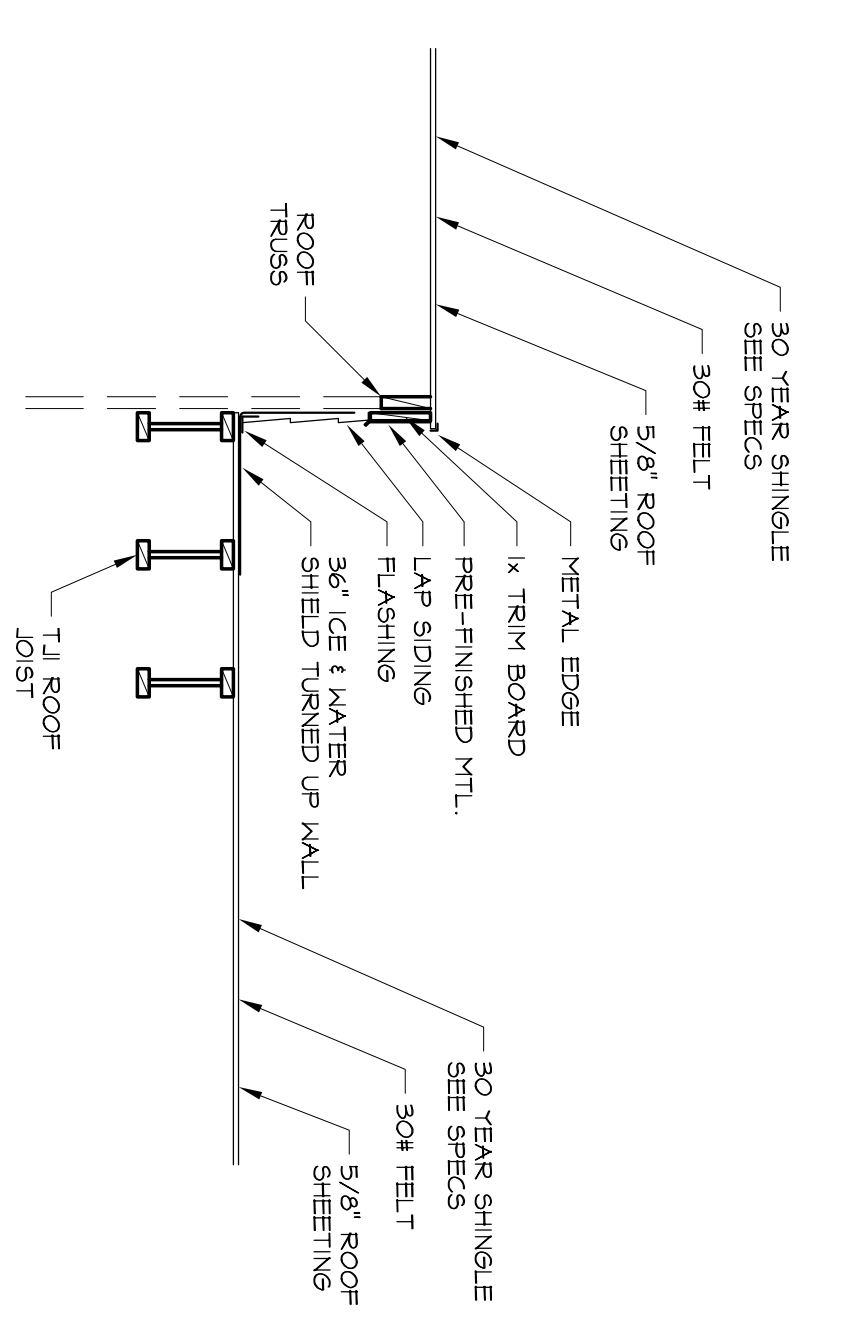
1 NORTH ELEVATION
SCALE: 1/8" = 1'-0"



3 ROOF PLAN
SCALE: 1/8" = 1'-0"



2 WEST ELEVATION
SCALE: 1/8" = 1'-0"



4 ROOF SECTION
SCALE: 1/2" = 1'-0"

All furnished drawings, Specifications, and copies are property of the Architect. They are to be used only with respect to this project and are not to be used for any other project without the written consent of the Architect. In the event of any dispute, such documents are to be returned to the Architect. The Architect's liability is limited to the amount of the fee received for the preparation of the drawings. Submission or distribution to any other party without the written consent of the Architect is prohibited. The Architect's common law copyright is reserved.

WHITE RIVER TOWNSHIP FIRE DEPARTMENT
FIRE STATION NO 51

SET: _____ DATE: _____

CONSTRUCTION DOCUMENT
ELEVATIONS

Job Number: 2414
Drawn By: SGS
Date: December 16, 2005
Checked By: DIS

SHEET NUMBER

A202