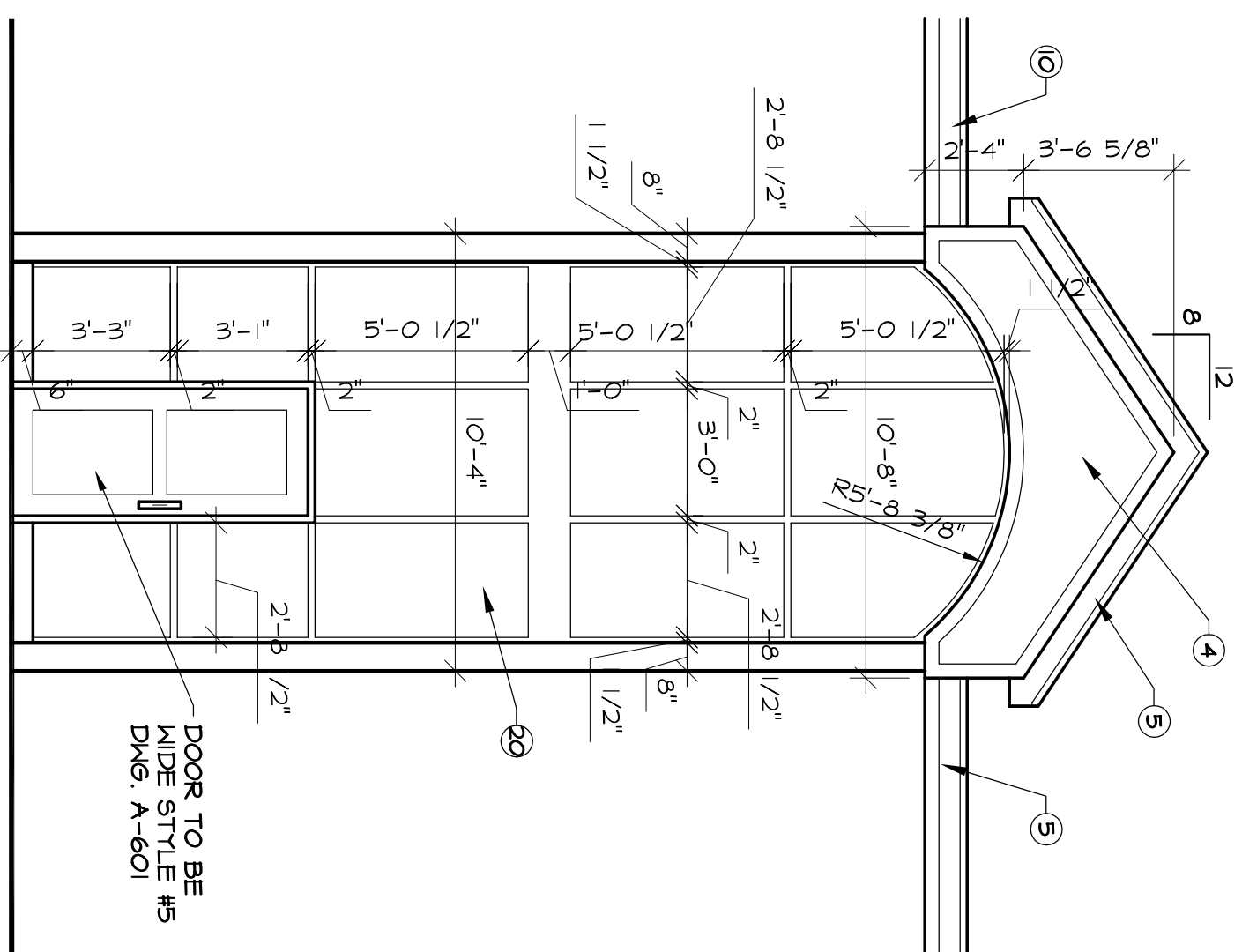
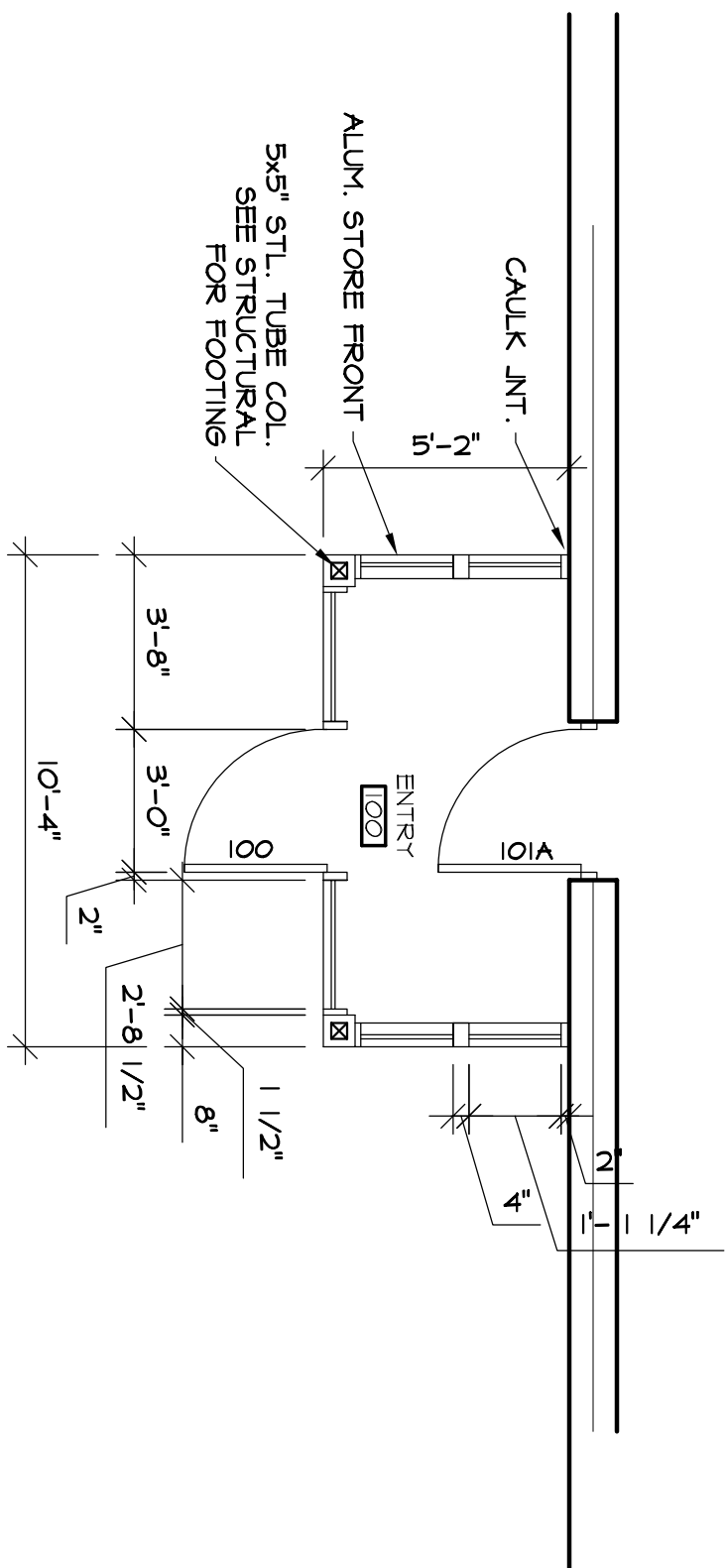


SPECIFIC PLAN NOTES:

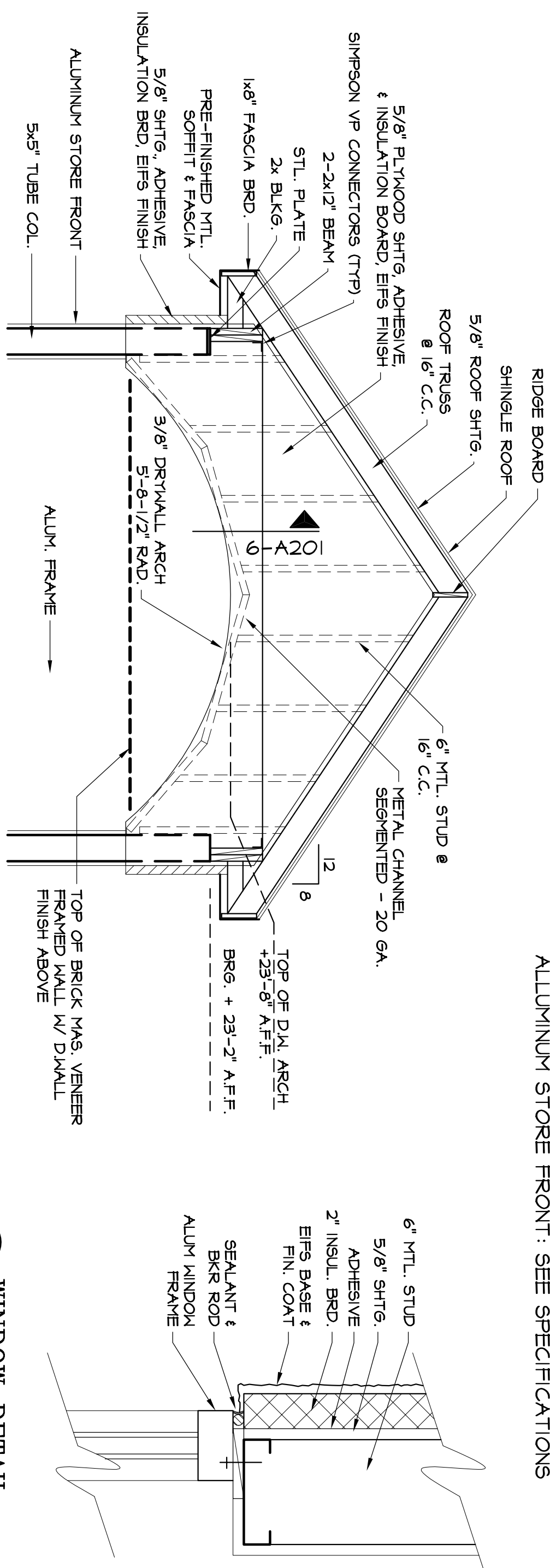
- ① MASONRY VENEER, SEE SPECS.
- ② KEYS (TYPICAL)
- ③ 6" GERBERT LAP SIDING
- ④ EIFS
- ⑤ PRE-FINISHED METAL FASCIA
- ⑥ PRE-FINISHED METAL RAKE BRD.
- ⑦ SHINGE ROOF, SEE SPECS.
- ⑧ DECORATIVE VENT LIKE PYPON 24" RAD.
- ⑨ 6" METAL GUTTER
- ⑩ DOWN SPOUT & SPLASH BLK (TYP)
- ⑪ STEEL BOLLARD, CONCRETE FILLED
- ⑫ ALUMINUM STOREFRONT ENTRY
- ⑬ CONTROL JOINT
- ⑭ STOOP OR SIDEWALK, SEE CIVIL PLANS
- ⑮ OVERHEAD DOORS AND YANBS TO BE PAINTED
- ⑯ SIGNAGE BY OWNER, B.P. #14 TO PROVIDE 120 V. POWER & PHOTO CELL FOR FUTURE SIGN, LOCATIONS TO BE COORDINATED WITH THE ARCHITECT
- ⑰ EIFS MULTIBEE CROSS, INLaid IN MASONRY WALL
- ⑱ SEE DETAIL.
- ⑲ FIXED WINDOWS
- ⑳ GLASS TO BE SAFETY W/2 INSL. PANES
- ㉑ EXISTING GARAGE (APPROX)



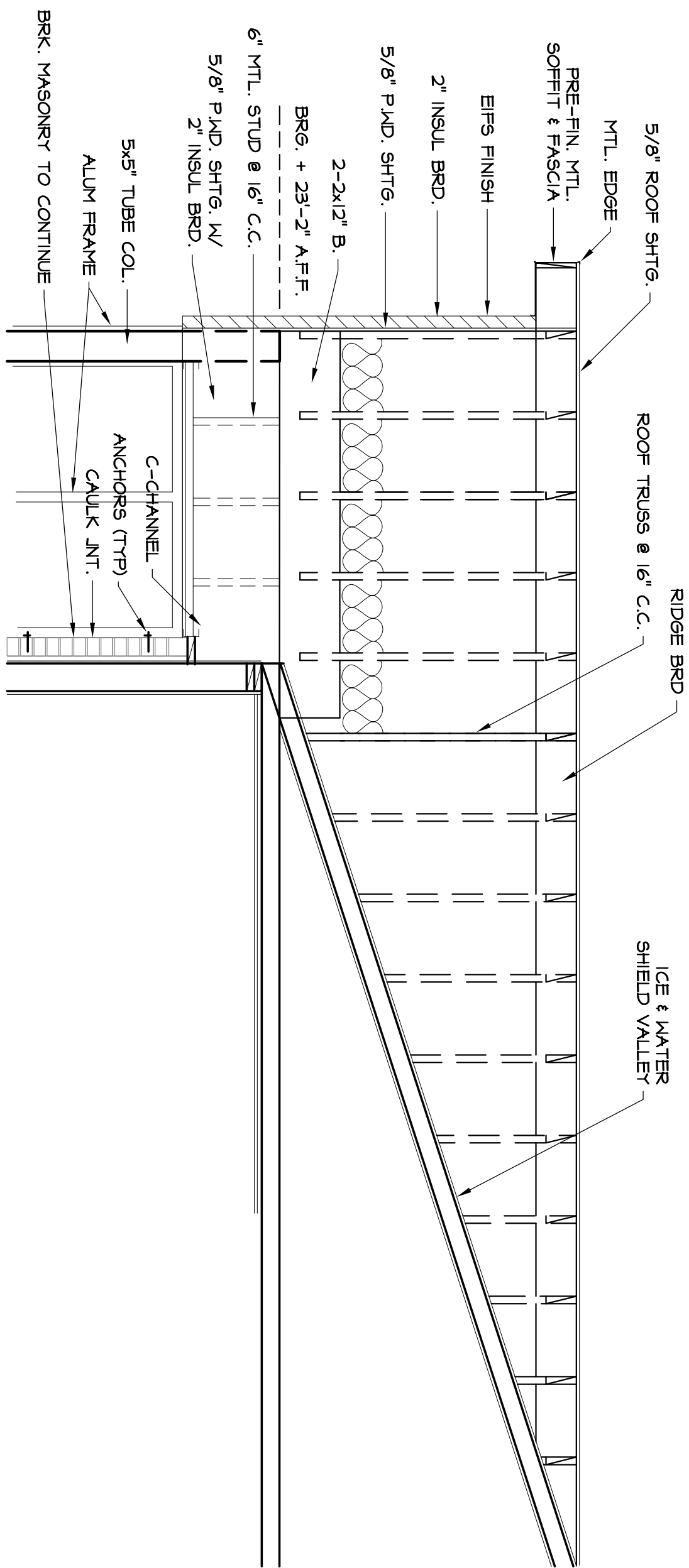
4 ENTRY ELEVATION DETAIL
SCALE: 1/4" = 1'-0"



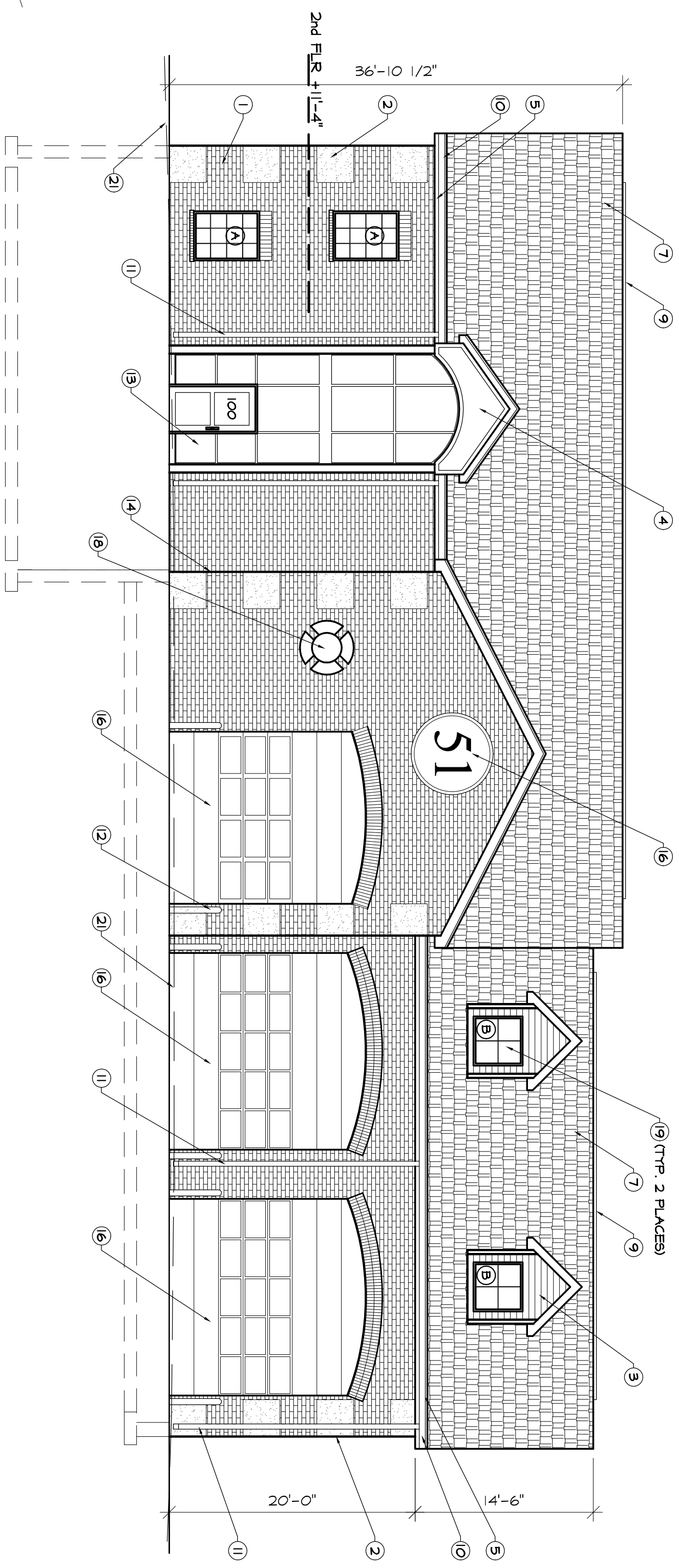
3 ENTRY PLAN DETAIL
SCALE: 1/4" = 1'-0"
ALUMINUM STORE FRONT: SEE SPECIFICATIONS



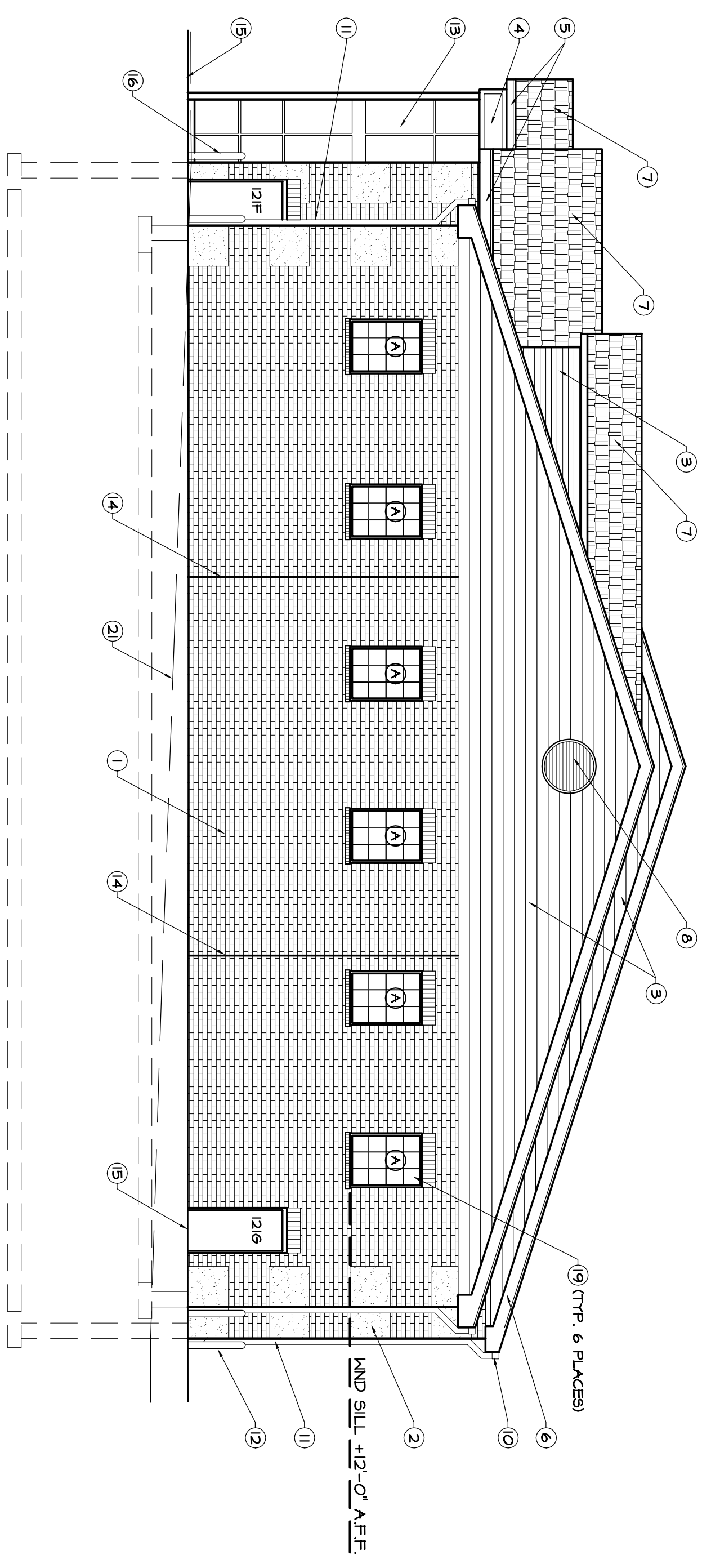
5 ENTRY FRAMING DETAIL
SCALE: 1/2" = 1'-0"



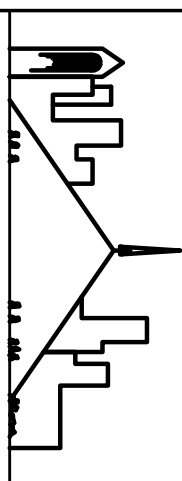
7 ENTRY FRAMING DETAIL
SCALE: 1/2" = 1'-0"



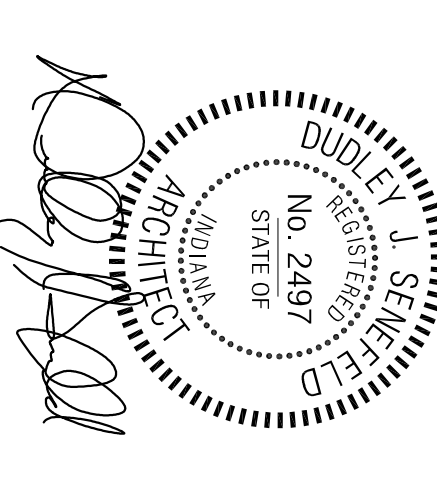
1 SOUTH ELEVATION
SCALE: 1/8" = 1'-0"



2 EAST ELEVATION
SCALE: 1/8" = 1'-0"



Senefeld and Associates,
Architects, Inc.
802 Mulberry St., 11-1
Noblesville, Indiana 46060
P. (317) 774-1400
F. (317) 774-8518



All furnished drawings, Specifications, and copies are property of the Architect. They are to be used only with respect to this project and are not to be used for any other project without the written consent of the Architect. The Architect's consent is not to be construed as an endorsement or warranty of the work shown on the drawings. The Architect's consent is not to be construed as an endorsement or warranty of the work shown on the drawings. The Architect's consent is not to be construed as an endorsement or warranty of the work shown on the drawings.

WHITE RIVER TOWNSHIP FIRE DEPARTMENT
FIRE STATION NO 51

SET: DATE:

CONSTRUCTION DOCUMENT
ELEVATIONS

Job Number: 2414
Drawn By: SGS
Date: December 16, 2005
Checked By: DJIS

SHEET NUMBER

A201